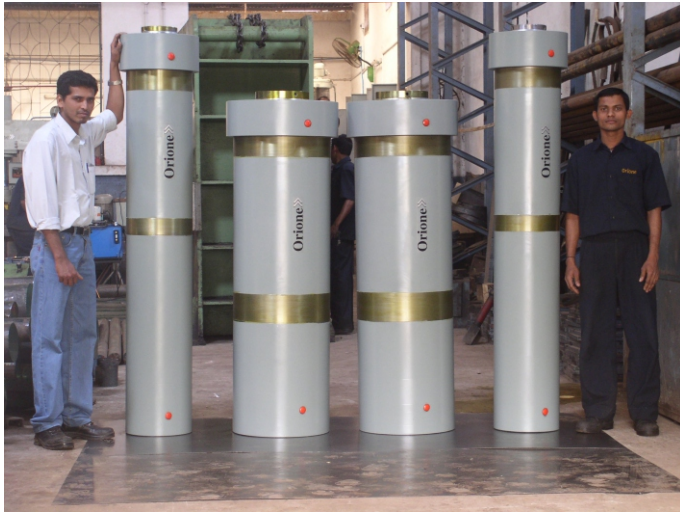


# Customised Hydraulic Cylinders

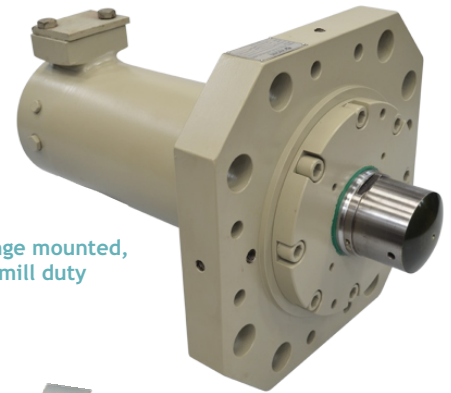
Pressure 100 - 400 bar



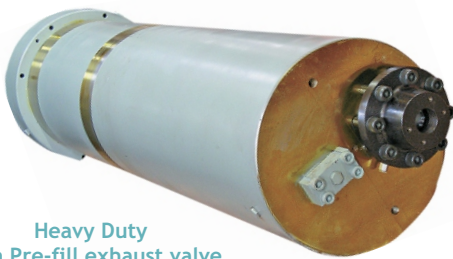
Heavy Duty Cylinders

## Features

- “Orione” Cylinders are precision engineered in design and construction for reliability and trouble free performance.
- The cylinder tube St 52/ASTMA103 is machined and honed.
- Piston rod of C45 machined, ground & hard chrome plated to 50 microns layer thickness.
- Gland bush of Phosphor Bronze to IS:28 ingot grade.
- Seals: Polyurethane / glyd rings.



Front Flange mounted,  
Steel mill duty



Heavy Duty  
with Pre-fill exhaust valve



Double Acting,  
Front Flange Mounted



Both end Flange mounted,  
Steel mill duty



Plain Rear Clevis,  
Threaded Ram End

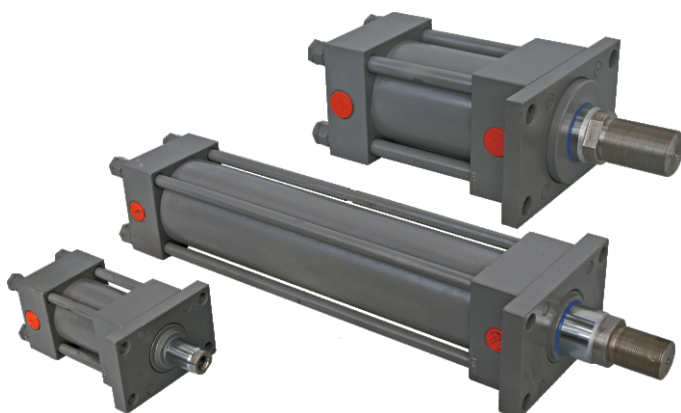


Outrigger Cylinder

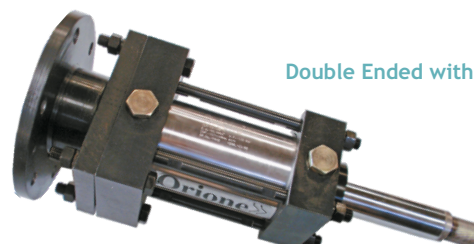
## Tie Rod Construction



With Cushioning and Clevis At Both Ends



Low Pressure, Rectangular Flange Mounting



Double Ended with Bottom Flange

## Customised Hydraulic Cylinders

Pressure 100 - 400 bar

### Double Ended Cylinders



Ram End Mounting



Trunnion Mounted



Trunnion & Ram End Self-aligning Clevis

### Both End Clevis Cylinders



Both End Self-aligning Clevis & Counter Balance Valve Block

#### Both End Self-aligning Clevis



#### Both End Clevis



CUSTOMISED PRODUCTS

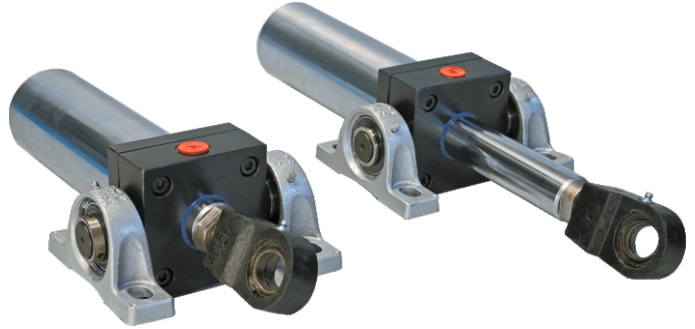
## Customised Hydraulic Cylinders

Pressure 100 - 400 bar

### Trunnion Mounted Cylinders



Double Acting Cushioned Cylinder  
For 2000 mm Size Butterfly Valve Actuation

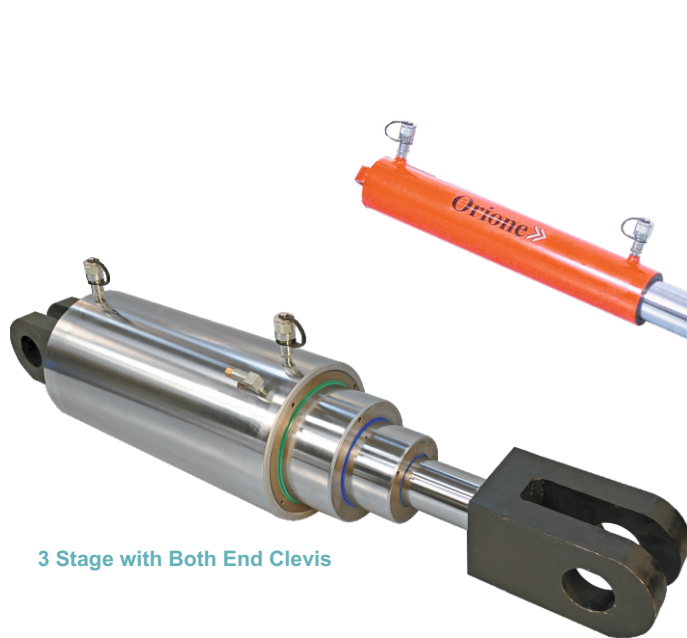


Ram End Self-aligning Clevis

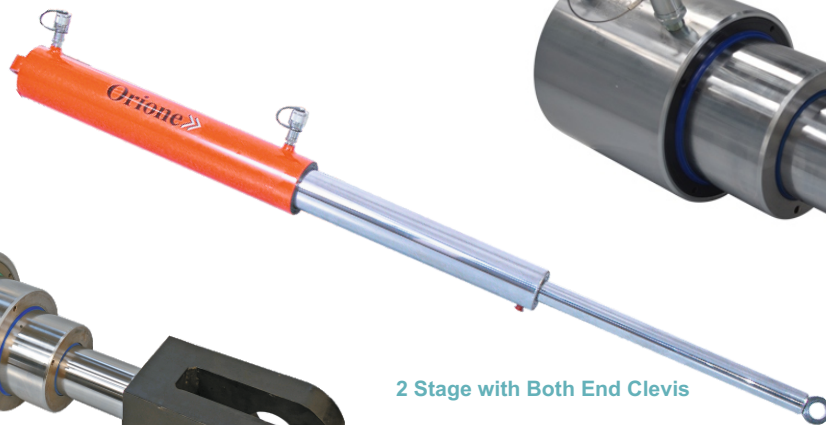


Trunnion Mounted  
With Valve Block

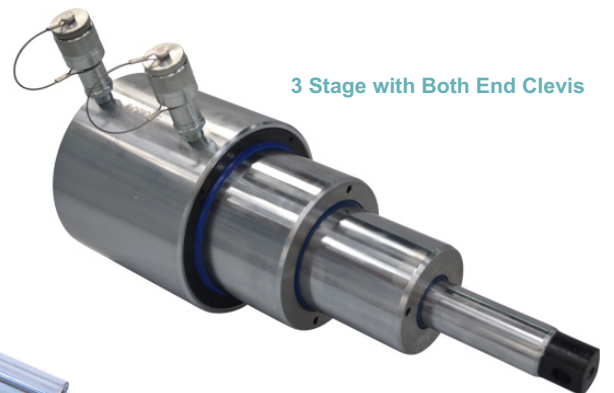
### Double Acting Telescopic Cylinders



3 Stage with Both End Clevis



2 Stage with Both End Clevis



3 Stage with Both End Clevis

### Double Acting With Ports On Ram



Forward & Return Ports  
On Piston Rod